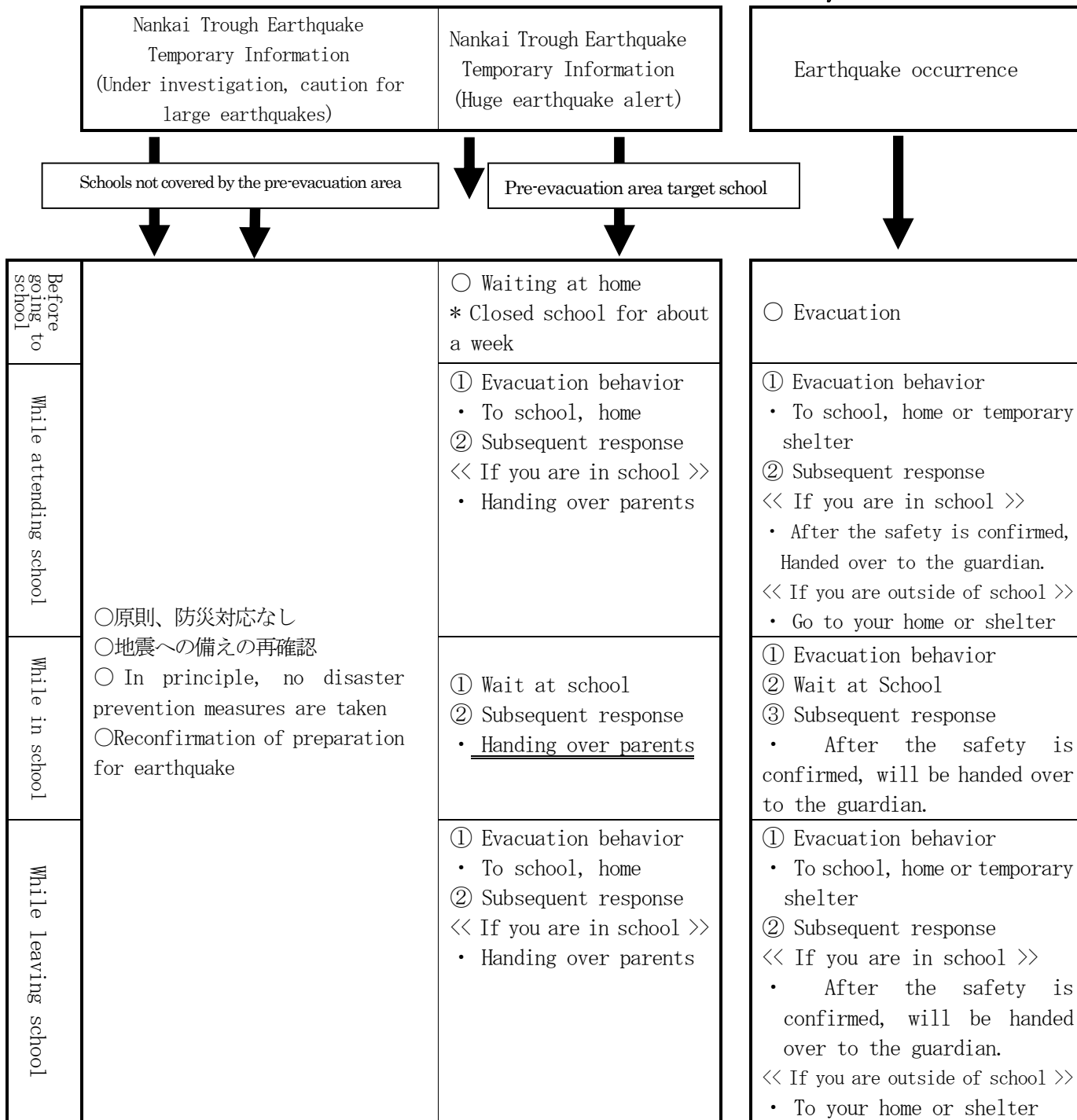


「南海トラフ地震臨時情報」発表時及び大規模地震（震度5弱以上）発生時、その後の対応基準
**Standards for responding to the announcement of "Nankai Trough Earthquake Temporary Information"
 and the occurrence of large-scale earthquakes (seismic intensity 5 or higher)**

Iwata City Board of Education



【Points to keep in mind】

- If information about the tsunami is issued, do not return to your home but evacuate to a hill.
- Regarding the delivery of parents, we will check the delivery system for each school (junior high school district) in consideration of sibling relationships. In addition, we will thoroughly inform parents in advance and clarify the correspondence of schools and kindergartens.
- Ask parents to discuss and confirm evacuation (location, method, etc.) when going to and from school.
- For announcement regarding Stay home or take measures to close school, we use the contact network or the CoDMON app to contact your family regarding school attendance or reopening of school. For school closures will be decided before going to school we will promptly report it to the Education and General Affairs Division.
- Check not only between staff members but also with parents about the contact method when telephone or email cannot be used.
- Depending on the information, the Board of Education may decide to take action.

- No shelter will be opened at the stage of announcing the Nankai Trough earthquake temporary information (huge earthquake warning).

[About the after-school children's club] [Hōkago jidō kurabu]

- When the Nankai Trough Earthquake Temporary Information (Huge Earthquake Warning) is announced, the after-school children's club [Hōkago jidō kurabu] of the pre-evacuation area target school will not open.

- When an earthquake with a seismic intensity of 5 or higher occurs, the children's club will not open after school.

<< About terms >>

- Evacuation areas ... Places where disaster victims live in evacuation (public facilities such as schools and community centers-44 locations in the city)

The evacuation shelter will be opened when a disaster event occurs (when an earthquake with a seismic intensity of 5 or higher occurs in the city, or when the damage is large with a seismic intensity of 5 or lower).

- Temporary evacuation site: A place to temporarily evacuate to protect the danger of life